

# Air Wash System



---

N60 W14459 Kaul Avenue  
Menomonee Falls, WI 53051  
Phone: 262-703-0890  
Fax: 262-703-0895  
Email: [sales@aquapoly.com](mailto:sales@aquapoly.com)  
[www.aquapoly.com](http://www.aquapoly.com)



**QUA POLY  
EQUIPMENT CO.**

# Air Wash System

With higher resin prices combined with the economical and environmental benefits of recycling Kongkilde introduces the Air Wash System.

The Kongskilde Air Wash System cleans and conveys your regrind all in one step.

The patent pending design uses one blower sized to efficiently evacuate, convey and clean your material. Unwanted fines, stringers and dust are collected in a sealed drum. **The results are:**

- A cleaner work area
- Better quality regrind
- Reduced maintenance
- Higher profits
- Recycling benefits

### Cost saving features:

- Industrial Construction built to last
- Minimal moving and wearing parts
- Dual Stage Cleaning
- Excellent for evacuating Granulators, Blenders and other processing equipment ensuring a homogeneous product.

The Kongskilde Air Wash System is constructed in a modular form allowing the system to be easily adapted to any situation.



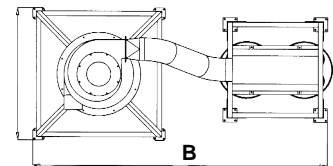
### Ideally suited for:

- Polypropylene Regrind
- Nylon Regrind
- ABS Regrind
- Polyethylene Regrind
- Pellet De-dusting
- Carpet Fiber Separation
- Rubber Regrind
- Fabric Backed Polypropylene

## Dimensions

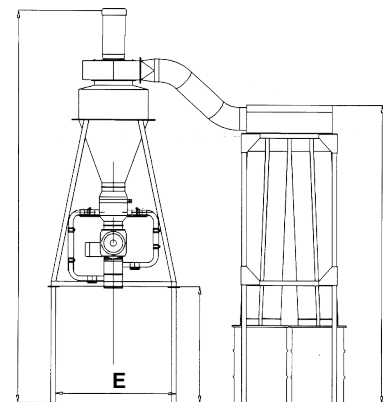
	Air Wash 50	Air Wash 100	Air Wash 150
	Inch/mm	Inch/mm	Inch/mm
A	162/4120	170/4319	167/4263
B	105/2690	126/3221	125/3174
C	125/3174	128/3264	128/3264
D	50/1270	50/1270	50/1270
E	50/1270	50/1270	50/1270
F	57/1448	57/1448	57/1448

### Air Wash 50/100/150



## Technical Data

Data	Air Wash 50	Air Wash 100	Air Wash 150
Blower	5 hp		10 hp
	15 hp Conveying Line Size		6" (160 mm)
	8" (200 mm)	10" (250 mm)	Air Volume 1,300
CFM	2,500 CFM	3,000 CFM Rotary Valve	
	3/4 hp	3/4 hp	3/4 hp
Approx. Capacity	500-1,000 lbs/hr	1,000-2,000 lbs/hr	2,000 +
lbs/hr Conveying Distance	< 20 ft	< 40 ft	< 60 ft
Filter Discharge	4 filters + 1 drum	8 filters + 2 drums	8 filters + 2 drums



N60 W14459 Kaul Avenue  
Menomonee Falls, WI 53051  
Phone: 262-703-0890  
Fax: 262-703-0895  
Email: [sales@aquapoly.com](mailto:sales@aquapoly.com)  
[www.aquapoly.com](http://www.aquapoly.com)



# PolyVac System



## POLY-VAC MODELS 20/40

### More than just a vacuum loader . . .

The Kongskilde **poly-vac** is uniquely designed for high capacity vacuum conveying. The continuous flow principle provides for constant transfer of material ensuring a more uniform feeding rate. When utilized with other Kongskilde piping and feeding equipment the **poly-vac** design achieves diversification in loading, clean-up and distribution from bulk storage.

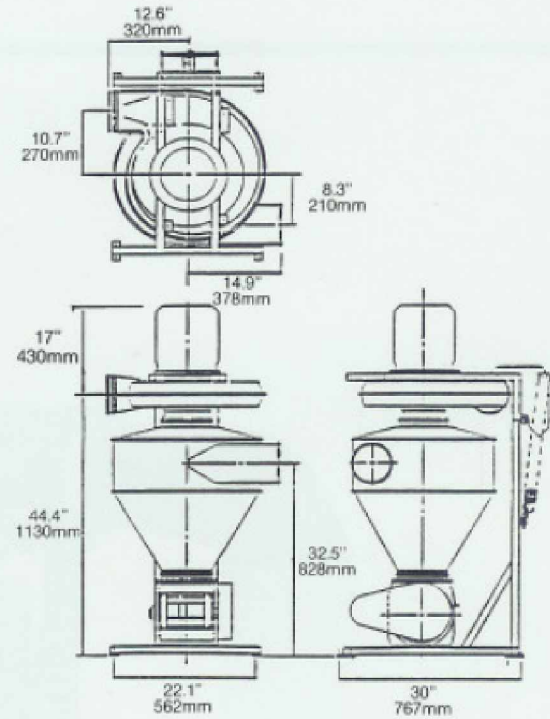
N60 W14459 Kaul Avenue  
Menomonee Falls, WI 53051  
Phone: 262-703-0890  
Fax: 262-703-0895  
Email: [sales@aquapoly.com](mailto:sales@aquapoly.com)  
[www.aquapoly.com](http://www.aquapoly.com)

**QUA POLY  
EQUIPMENT CO.**

# PolyVac System

## Specifications

Model	20	40
Motor	3 hp 3500 rpm	5 hp 3500 rpm
Frame	182T	184T
Phase	1 + 3	1 + 3
Voltage	220/440/575	220/440/575
Fan	3500 rpm	3500 rpm
Rotor	360 mm dia. on one stage centrifugal	415 mm
Weight with Motor	80 lbs. 38 kg	100 lbs. 45 kg
Rotary Valve RPM	65 rpm CAE20	65 rpm CAE20
Rotary Valve Motor	½ hp 1750 rpm	½ hp 1750 rpm
Hose & Nozzles	4" Poly	4" Poly



"Swing up" design provides easy access to cyclone area for inspection or servicing.

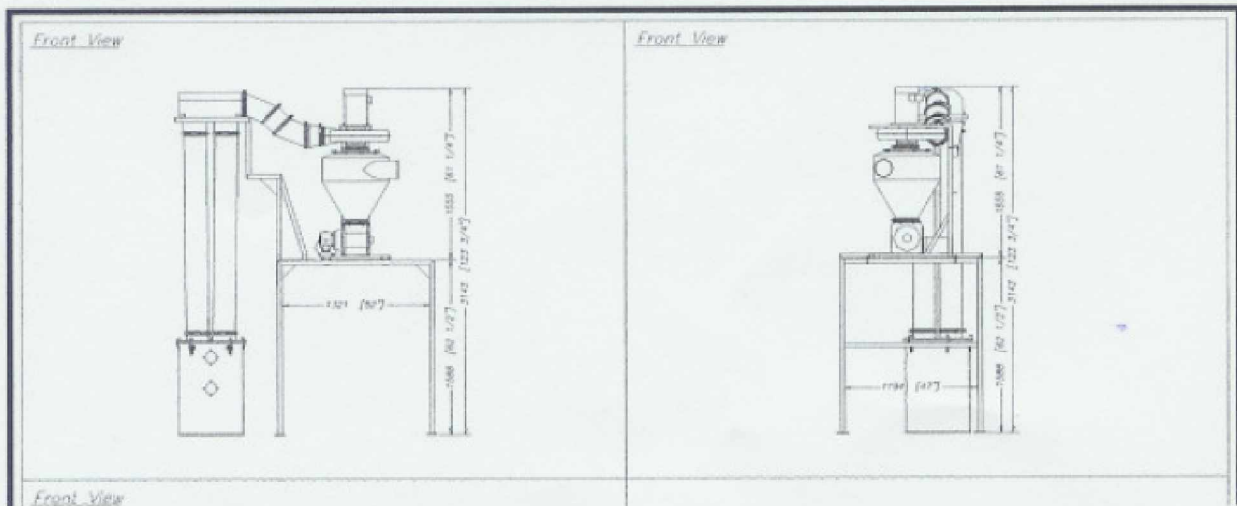
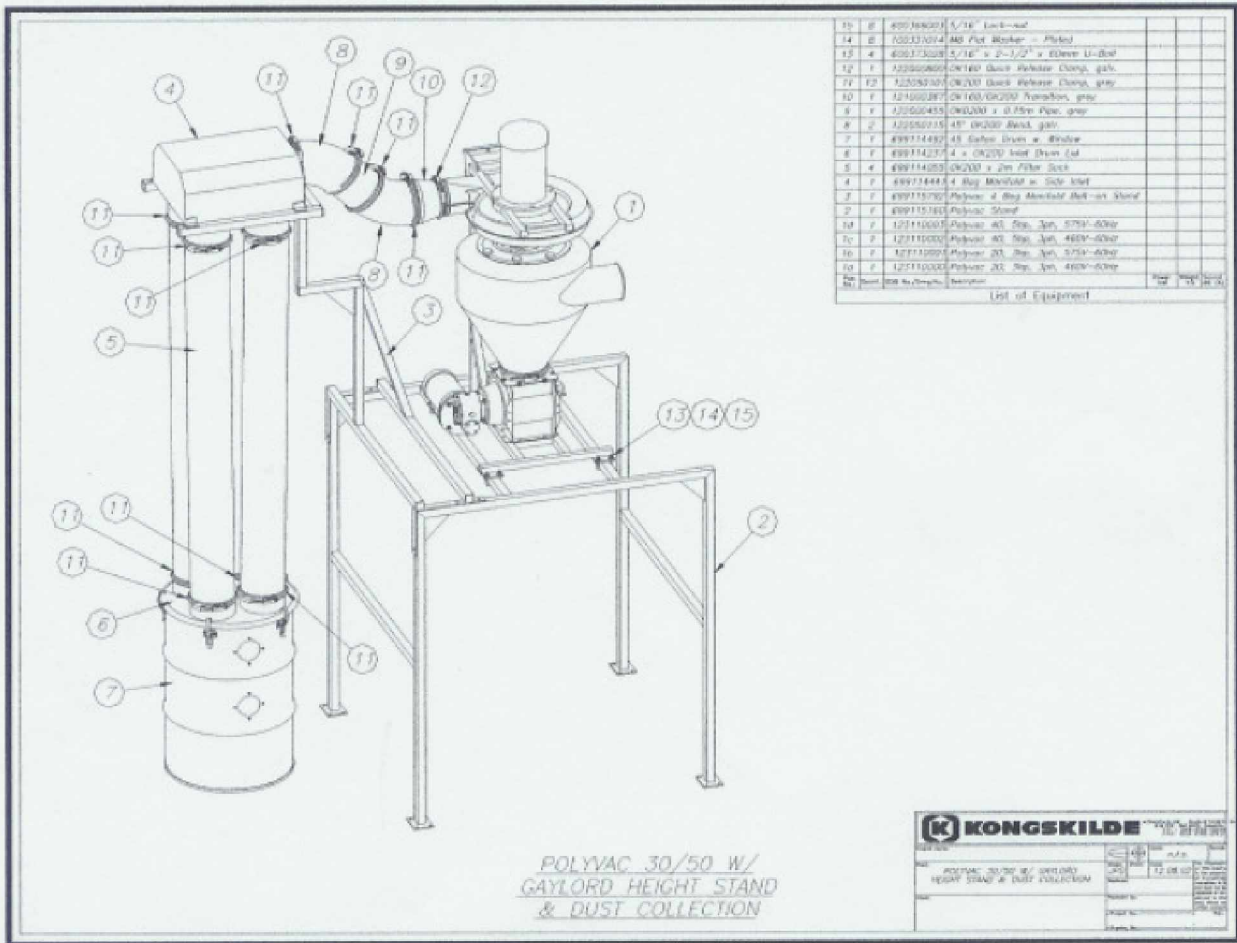


Light weight probe is convenient in use and maximizes pick-up of materials from gaylord storage.

N60 W14459 Kaul Avenue  
Menomonee Falls, WI 53051  
Phone: 262-703-0890  
Fax: 262-703-0895  
Email: [sales@aquapoly.com](mailto:sales@aquapoly.com)  
[www.aquapoly.com](http://www.aquapoly.com)

**QUA POLY  
EQUIPMENT CO.**

# PolyVac Layout



N60 W14459 Kaul Avenue  
 Menomonee Falls, WI 53051  
 Phone: 262-703-0890  
 Fax: 262-703-0895  
 Email: [sales@aquapoly.com](mailto:sales@aquapoly.com)  
[www.aquapoly.com](http://www.aquapoly.com)



## Inline Cutter



The MC 3000 has been developed for continuous cutting of continuous trim. The MC 3000 consists of a fixed and a rotating set of blades driven by a direct-coupled motor. The angled rotating blades provide

shockfree cutting and reduce the operating noise level. The shaftless cutting chamber and the fact that the end discs of the rotor serve as part of the cutting chamber prevents any change of wraps.

The rotor is mounted in "seal for life" precision ball bearings. The MC 3000 is installed in a pipe system in connection with either paper and printing press machinery or post-processing machinery.

---

N60 W14459 Kaul Avenue  
Menomonee Falls, WI 53051  
Phone: 262-703-0890  
Fax: 262-703-0895  
Email: [sales@aquapoly.com](mailto:sales@aquapoly.com)  
[www.aquapoly.com](http://www.aquapoly.com)



**QUA POLY  
EQUIPMENT CO.**

# Inline Cutter

## Technical Data

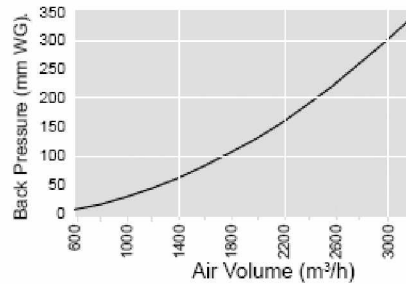
<b>MC 3000</b>	
Rotor	Angled Rotating
	6/2 rotating
	1 fixed

Blades are available in standard hardened steel with good resistance to wear and extended service life. Optional blades in tungsten carbide in various grades are also available.

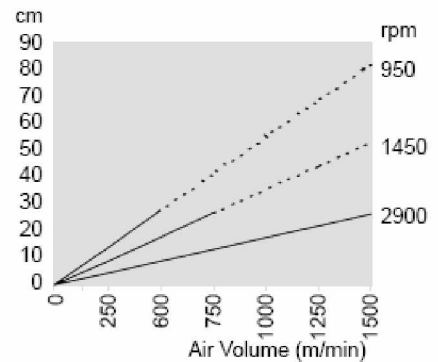
To obtain variable cutting speed, the cutter can be operated via an electrical frequency control.

Motor types for the MC 3000	K21R 80 K2 B14 IP55 0.75 kW	K21R 80 G4 B14 IP55 0.75 kW	K21 80 G6 B14 IP55 0.55 kW
R.p.m.	2900	1450	950
Weight in kg, MC 3000 and motor	47	48	49
Nom. cons. at 400 V	1.72 amp	2.10 amp	1.73 amp
Wiring	3 x 400 V, 50 Hz		
Start	Manual/Direct		

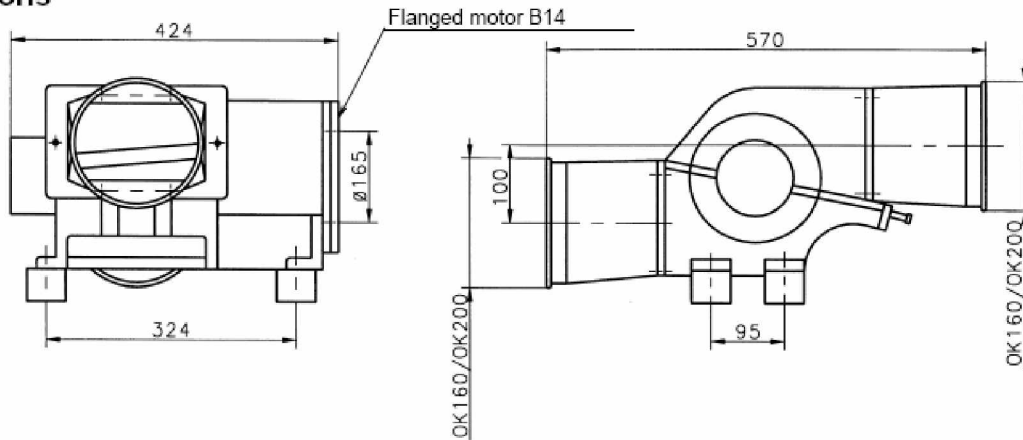
### Pressure loss across MC 3000



### Cutting Length



## Dimensions



N60 W14459 Kaul Avenue  
Menomonee Falls, WI 53051  
Phone: 262-703-0890  
Fax: 262-703-0895  
Email: [sales@aquapoly.com](mailto:sales@aquapoly.com)  
[www.aquapoly.com](http://www.aquapoly.com)



# Inline Venturi



The Kongskilde Inline Venturi system in conjunction with the Kongskilde Multiair blower unit is efficient for conveying of various materials such as continuous edge trim from paper and film manufacturing and processing industries.

Expanded polystyrene (E.P.S.), guillotine off cuts, roll ends, finished plastic products i.e. blow-moulded bottles, injection moulded products and blow/injection mould waste (Top, tails and sprues).

In addition the system can be utilised for explosive fume/vapour ventilation by removing the air return unit and replacing the air return with a large diameter duct.

---

N60 W14459 Kaul Avenue  
Menomonee Falls, WI 53051  
Phone: 262-703-0890  
Fax: 262-703-0895  
Email: [sales@aquapoly.com](mailto:sales@aquapoly.com)  
[www.aquapoly.com](http://www.aquapoly.com)



**QUA POLY  
EQUIPMENT CO.**

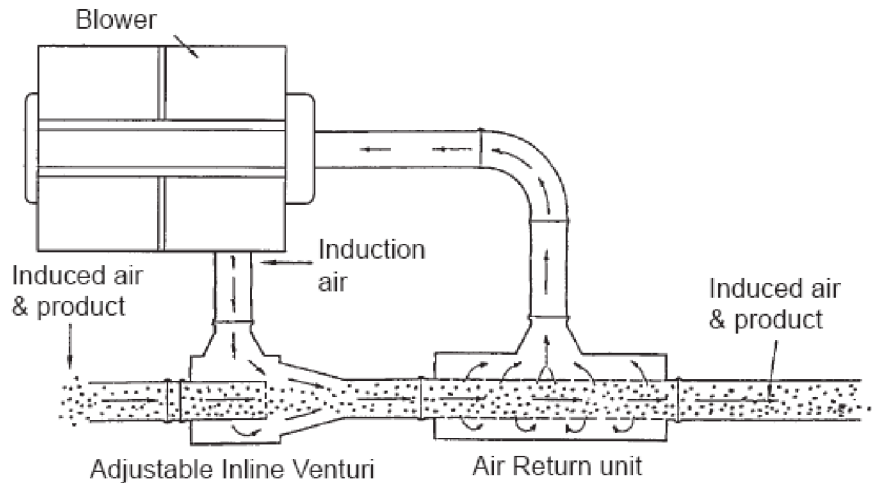
# Inline Venturi

Unlike conventional Venturi systems, the new Kongskilde Inline Venturi system offers improved suction allowing materials to enter directly into the piping.

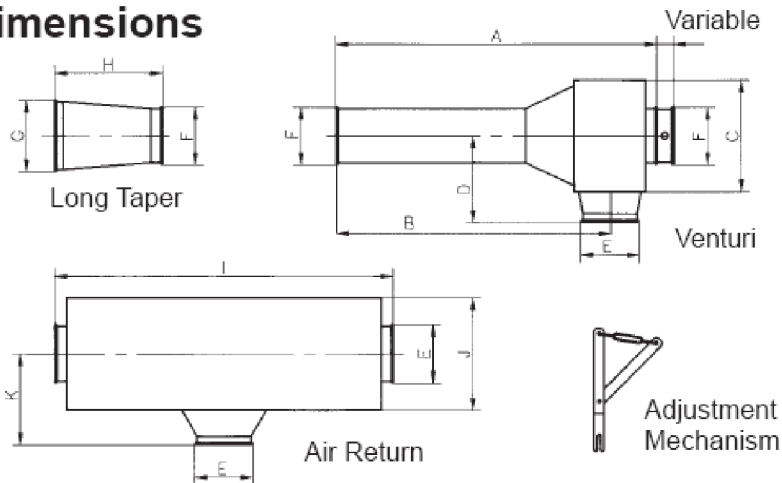
The Air Return unit returns the induction air back to the blower, thus permitting only the induced air and the products being conveyed, to pass freely through the Venturi.

The Kongskilde Inline Venturi system in operation has no moving parts, therefore, low maintenance.

## Principle of operation



## Dimensions



The Kongskilde Venturi system is especially suitable for materials with low density, "odd shapes" or continuous lengths.

The Kongskilde Inline Venturi system simply connects to all Kongskilde blowers and piping with the use of Kongskilde clamps. The Venturi system is available for adaptation to OK 100, OK 160, OK 200, ø250 mm and ø300 mm piping. An OK 160 Air Return is used with the OK 100 Venturi

The Air Return is also available with an Anti-Clog device.

Venturi system	A mm	B mm	C mm	D mm	E mm	F mm	G mm	H mm	I mm	J mm	K mm
OK 100	768	440	330	255	160	100	160	455	1000	330	268
OK 160	978	810	330	255	160	160	200	320	1000	330	268
OK 200	1146	1003	380	330	200	200	250	380	1000	380	330
Ø250	1387	1187	432	343	250	250	300	432	1448	457	406
Ø300	1914	1588	610	483	300	300	350	483	1778	610	508

Patented in CDN #1273380, USA #5002092, DK-NL-UK-F #0466699, D #69007787408